

all you need is a little imagination

If 'god is in the details' then it pays to know how to accessorise

| | | |
|---|---|---|
| The JD MacDonald brand has become one | have a tradition of high quality design and | includes waste units, soap and paper towel |
| of the most common sights in Australian | manufacturing for the commercial bathroom | dispensers, combo bin and paper towel units, |
| commercial bathrooms, for the most part due | sector and products that complimented the | shelves, mirrors, toilet roll holders, sanitary |
| to the success of hand dryers such as the | existing selection offered by JD MacDonald. | units, bench top towel and waste units, grab |
| 1000 Series and more recently the Select | The outcome of these partnerships is an | rails, shower seats and hooks. Products are |
| designer range of all-in-one hand drying units. | exclusive Australia-wide distribution agreement | available in recessed, surface mounted fixtures |
| It makes perfect sense then for JD MacDonald | with JD MacDonald, which allows access to | and stand-alone units. Also included in the |
| to extend its product range to include | a range of bathroom equipment that includes | range are an extensive choice of stainless |
| commercial bathroom equipment and fixtures. | over 50,000 individual items. More importantly, | steel handrails and a selection of disabled |
| To achieve this JD MacDonald searched | JD MacDonald now stock over 70 unique | shower seats. This range of stock items will |
| the world over for an organisation with the | commercial bathroom fittings and fixtures for | evolve over time to include even more choice, |
| same exacting standards and found not | immediate Australia-wide delivery. The new | allowing you more flexibility when designing |
| one, but two new partners. These partners | JD MacDonald bathroom accessories range | commercial bathrooms. |



10*



52*



12



35



49*



57*



21*



7, 6*



41*

28*



38



37



31



59*



46*



51



60*



18*



3



44*



64



17*



15*



13*



8*



14*



34



54



5*



55*



1



48*



39*



42*



45



19*



63



22*



58*



9



40*



62*



11*



33



56



2

53*



36



61*



65

20*



24



30



23*



4*

1 0030 – Surface Mounted Dual Roll Toilet Paper Dispenser. Holds two rolls up to 135mm diameter. Top roll automatically drops in place when bottom roll is used up. Type 304 stainless steel cabinet and mechanism. Theft resistant spindles. Size: 150 x 300 x 165mm.

2 0040 – Surface Mounted Twin 9” Jumbo Toilet Roll Dispenser. Holds two 1230mm diameter rolls of 57 or 76mm diameter core. When one roll is depleted, slide panel to expose other roll. Door cabinet and mounting plate constructed of 18 gauge type 304 stainless steel with satin finish. Two viewing slots reveal toilet tissue rolls inside. Equipped with tumbler lock. Size: 530 x 290 x 160mm.

3 0041 – Surface Mounted Jumbo Roll Toilet Roll Dispenser. Holds one 1230mm diameter roll of 57 or 76mm diameter core. Door cabinet and mounting plate are type 304 stainless steel with satin finish. Unit has viewing slot and tumbler lock. Size: 270 x 280 x 120mm.

4* 0210 – Paper Towel Dispenser. Dispenses 400 interfold or 525 multifold paper towels without adjustment or adapters. Constructed of 22 gauge stainless steel with No. 4 satin finish. Fitted with tumbler lock and heavy duty stainless steel piano hinge. Size: 280 x 370 x 102mm.

5* 0215 – Paper Towel Dispenser – Petite. Similar to 0210, except reduced capacity for low traffic areas. Dispenses 200 interfold or 275 multifold paper towels. Size: 280 x 205 x 102mm.

6* 0263-1 – Single Roll Toilet Paper Dispenser. Not shown. Similar to 0264-1, except single roll toilet paper dispenser. Size: 167 x 44 x 120mm. **0263-1A:** Not shown. Similar to 0263-1, except has free rolling spindle with uncontrolled delivery.

7 0264-1 – Double Roll Toilet Paper Dispenser. Heavy duty cast aluminum, satin finish. No waste rocking action spindles of cycloac ABS thermoplastic. Holds two rolls up to 150mm diameter (2000 sheets). Size: 330 x 45 x 120mm. **0264 -1A:** Not shown. Similar to 0264-1, except without controlled delivery. **0264-12:** Not shown. Similar to 0264-1, except with vandal resistant spindle locked into place by concealed set screw. **0264-1A2:** Not shown. Similar to 0264-1 with less controlled delivery.

8* 0326 – Recessed Horizontal Soap Dispenser. Soap vessel pulls out for easy fitting and cleaning. Stainless steel with No. 4 satin finish. Contains all-purpose soap valve, 1.5L capacity, unbreakable refill window. Wall opening: 230 x 125 x 110mm.

9 0332 – Lavatory Mounted Soap Dispenser. Corrosion-resistant valve dispenses viscous lotion soaps and synthetic detergents. Fills from top for ease of maintenance. Free turning spout is vandal resistant. Spout and stem are stainless steel with bright finish. Escutcheon is chrome-plated brass. Adjustable threaded shank allows for installation in counter tops up to 90mm thick through 22mm diameter hole. Spout length: 4" (0332), 6" (0332-D).

10* 0342 – Horizontal Soap Dispenser. Stainless steel with No. 4 satin finish. Contains all-purpose soap valve and unbreakable refill window. Concealed fastening and hinged filler-top. Capacity: 1.2L. Size: 205 x 120 x 135mm projection.

11* 0343 – Vertical Soap Dispenser. Stainless steel with No. 4 satin finish. Contains all-purpose soap valve and unbreakable refill window. Concealed fastening and hinged filler-top. Capacity: 1.2L. Size: 120 x 205 x 135mm projection.

12 0346 – Soap Dispenser for Showers. Similar to 0343, except valve mounted vertically from bottom of container for use in showers.



13* 0350 – Surgical Soap Dispenser.

Dispenses antiseptic solutions and synthetic detergent soaps. Chrome-plated brass bracket, internal valve parts stainless steel and plastic. Capacity: 0.5L white polyethylene globe. Height: 165mm. Valve projection: 130mm.

14* 0351 – Surface Mounted Liquid Soap Dispenser.

Stainless steel tapered housing with mirror polished finish and removable plastic globe, specially keyed chained filler cap, concealed mounting. Used for viscous lotion soaps and synthetic detergents. Capacity: 0.4L. Size: 80 x 150 x 160mm.

15* 0452 – Paper Towel Dispenser.

Dispenses 600 interfold or 800 multifold paper towels. 22 gauge type 304 stainless steel doors and cabinet. Wall opening: 325 x 670 x 102mm.

16* 0458 – Semi-Recessed Waste Receptacle.

Stainless steel waste container locks into cabinet, removable for servicing. Wall opening: 400 x 740mm.

17* 0462-AD – Paper Towel Dispenser and Waste Receptacle.

Dispenses 350 interfold or 475 multifold paper towels. Provided with removable 7.6L waste container. 22 gauge type 304 stainless steel doors and cabinet. Wall opening: 325 x 670 x 102mm. **0462-AD-9:** Not shown. Same as 0462-AD, except with stainless steel collar for surface mounting.

18* 0469 – Paper Towel Dispenser and Waste Receptacle.

Dispenses 600 interfold or 800 multifold paper towels. Removable 46L stainless steel waste receptacle is locked into cabinet. 22 gauge type 304 stainless steel doors and cabinet. Wall opening: 400 x 1390 x 102mm. **0469-9:** Not shown. Same as 0469, except with stainless steel collar for surface mounting.

19* 0600 – Angle Frame Mirror.

19 x 16mm roll formed 18 gauge type 304 stainless steel angle has corners heliarc welded, ground and polished smooth to a uniform satin finish. Mirror is installed on concealed hanging bracket that locks onto top and bottom of frame by tamper proof set screws. Back plate is one piece, attached to frame with theft resistant locking device.

20* 0605 – Angle Frame Mirror with Shelf.

Similar to 0600, but includes shelf of 18 gauge stainless steel with satin finish and all edges returned and hemmed for maximum rigidity and safety. Shelf is welded to face frame and is 127mm wide.

21* 0620 – Channel Frame Mirror.

13 x 13 x 13mm, 20 gauge type 304 satin finish stainless steel channel is a one piece roll formed member that encases mirror and backing revealing a tight mitered corner. Mirror is installed on two wall brackets and held secure by theft resistant screw.

22* 0625 – Channel Frame Mirror with Shelf.

Similar to 0620, except with 18 gauge stainless steel shelf with satin finish and all edges returned and hemmed for maximum rigidity and safety. Shelf is welded to face frame and is 127mm wide.

23* 0692 – Shelf.

Constructed of 18 gauge stainless steel with a No. 4 satin finish. All edges are hemmed for maximum rigidity and safety.

24 0697-GAL – Shelf and Double Toilet Paper Holder.

Shelf is 18 gauge type 304 stainless steel satin finish with front edge hemmed. Holds two standard toilet paper rolls. Size: 460 x 130mm.

25* 0710 – Surface Mounted Single Toilet Roll Holder Chrome Plated Steel.

Not shown. Similar to 0715, except dispenses one standard toilet paper roll. Size: 150 x 70 x 110mm.

26 0712 – Retractable Clothes Line.

Polished stainless steel unit has spring actuated 150mm vinyl cord with white vinyl knob and locking nut to hold stretched line taught. Installs over bathtub or in shower.

27 0715 – Surface Mounted Double Toilet Roll Holder Chrome Plated Steel.

Provided with vandal resistant locking device and mechanism for controlled delivery. High polish finish. Dispenses two standard toilet paper rolls. Size: 315 x 70 x 110mm.

28* 0751 – Heavy Duty Robe Hook.

Concealed mounting satin chrome-plated brass, 80mm projection.

29 0810 – Free Standing Waste Receptacle.

Constructed of 22 gauge type 304 stainless steel with satin finish. Top with self-closing doors. Vinyl wall bumpers – top and bottom, rubber feet. Hooks for liners. Capacity: 49L. Size: 330 x 735 x 330mm. **0812:** Not shown. Similar to 0810, except 72L. Size: 330 x 940 x 355mm.

30 0811 – Free Standing Open Waste Receptacle.

Same as 0810, except without top. Size: 330 x 560 x 330mm. **0813:** Not shown. Similar to 0811, except 72L. Size: 330 x 760 x 355mm.

31 0825 – Surface Mounted Large Capacity Waste Receptacle.

Constructed of 22 gauge type 304 stainless steel with satin finish. Top and bottom edges hemmed for safety, interior hooks for liner. Capacity: 79.5L. Size: 400 x 555 x 300. **0826:** Not shown. Similar to 0825, except with 45.4L capacity. Size: 390 x 585 x 200mm.

32 0827 – Surface Mounted Small Capacity Waste Receptacle.

Constructed of 22 gauge type 304 stainless steel with satin finish. Top and bottom edges hemmed for safety. Capacity: 7.6L. Size: 275 x 230 x 110mm.

33 0828 – Surface Mounted Medium Capacity Waste Receptacle.

Constructed of 22 gauge type 304 stainless steel with satin finish. Top and bottom edges hemmed for safety. Capacity: 26.5L. Size: 355 x 430 x 165mm.

34 0829 – Surface Mounted Corner Waste Receptacle.

Constructed of 22 gauge type 304 stainless steel with satin finish. Top and bottom edges hemmed for safety. Capacity: 49L. Size: 380 x 585 x 370mm.

35 0852 – Surface Mounted Sanitary Napkin Disposal.

Constructed of 18 gauge type 304 stainless steel with satin finish. Sloping cover has full length piano hinge. Size: 190 x 255 x 95mm.

36 1001 – Counter Top Paper Towel Dispenser and Waste Receptacle.

Towels loaded by pushing through hinged dispensing flaps. Capacity: One packet of interfold paper towels. Unit provided with loose waste receptacle to be placed directly below waste door on the vanity floor. Counter opening: 320 x 340mm.

37 1002 – Counter Top Paper Towel Dispenser.

Towels loaded by pushing downward through hinged dispensing flaps. Capacity: One packet of interfold paper towels. Counter opening: 310 x 110mm.

38 1003 – Counter Top Waste Receptacle.

Push door is self-closing. A 305 x 305 x 365mm waste receptacle is furnished to be placed directly below waste door on the vanity floor. Counter opening: 320 x 220mm.

39* 5001-SS – Cartridge Soap Dispenser.

Surface mounted, stainless steel satin finish door has piano hinge and lock. Body is 16 gauge, door is 22 gauge. Provides up to 1500 hand washes per cartridge. New cartridge and valve with each refill. Size: 110 x 280 x 100mm.

40* 6457 – Recessed Paper Towel Dispenser.

Dispenses 350 interfold or 475 multifold paper towels. Doors are 18 gauge, type 304 stainless steel with No. 4 satin finish and cabinet is 20 gauge, type 304 stainless steel. Wall opening: 290 x 400 x 110mm.

41* 6462 – Paper Towel Dispenser and Waste Receptacle.

Unit is provided with an adapter which permits changing from single fold towels to interfold or multifold towels. Doors are 18 gauge, type 304 stainless steel with No. 4 satin finish and cabinet is 20 gauge, type 304 stainless steel. Capacity: Towel dispenser – 600 interfold or 800 multifold. Waste receptacle – 34L. **6462-9:** Not shown. Similar to 6462, except with stainless steel collar for surface mounting.

42* 64623 – Recessed Paper Towel Dispenser and Waste Receptacle.

Dispenses 350 interfold or 475 multifold paper towels. Doors are 18 gauge, type 304 stainless steel with No. 4 satin finish and cabinet is 20 gauge, type 304 stainless steel. Capacity: 8.4L. Wall opening: 325 x 675 x 110mm.

43* 6467 – Paper Towel Dispenser and Waste Receptacle.

Dispenses 600 interfold or 800 multifold paper towels. Removable 18.9L stainless steel container. Doors are 18 gauge, type 304 stainless steel with No. 4 satin finish and cabinet is 20 gauge, type 304 stainless steel. Wall opening: 290 x 1360 x 110mm. **6467-9:** Not shown. Similar to 6467, except with stainless steel collar for surface mounting.

44* 7305 – Single Surface Mounted Toilet Paper Holder.

Type 304 stainless steel with bright or satin finish chrome-plated roller. Heavy gauge concealed bracket mounts on wall secured by means of stainless steel set screw. Unit measures 50mm high, 200mm wide; projects 100mm from wall. Holds standard toilet roll. **7305-B:** Bright finish. **7305-S:** Satin finish.

45 7305-2 – Double Surface Mounted Toilet Paper Holder.

Similar to 7305, except holds two standard toilet rolls. Unit is 345mm wide. **7302-2B:** Satin finish. **7302-2S:** Bright finish.

46* 7320 – Soap Dish.

Constructed of stainless steel, type 304. One-piece soap dish welded to support arm and flange. Has two drain holes and two ridges to support bar of soap. 110mm wide, 50mm high; projects 100mm from wall.

47* 7340 – Single Robe Hook.

Constructed of stainless steel, type 304. Hook extends 40mm from wall.

48* 7380 – Shelf.

Constructed of stainless steel, type 304. Available in 460 and 610mm lengths. Shelf is 125mm wide, extends 155mm from wall. Edges are roll-formed for safety.

49* 7382 – Hat and Coat Hook.

Constructed of stainless steel, type 304. Double hook for both coats and hats. 75mm projection.

50* 7402 – Recessed Toilet Paper Holder.

One-piece construction, 22 gauge type 304 stainless steel. Spring loaded chrome roller. Wall opening: 140 x 140 x 50mm. Size: 320 x 160mm.

51 74022-HSM – Double Roll Surface Mounted Toilet Paper Holder.

Shown. Similar to 7402 but surface mounted and holds two toilet rolls. Wall opening: 300 x 135 x 50mm. Size: 320 x 160mm. **74022:** Not shown. Similar to 74022-HSM but recessed and without hoods.

52* 8165 – Roll Paper Towel Dispenser.

Heavy duty aluminum casting with satin finish. Molded plastic spindle has concealed locking device which prevents theft of paper towels and spindle. Controlled delivery, allowing perforated paper towels to be torn from roll. Holds standard roll paper towels. Measures 330mm wide; projects 125mm from wall.

53* 8203-M-AU – Compact Rectangular Phenolic Fold-up Shower Seat. Meets Australian Standards and the needs of the physically disabled and elderly. Seat is 8mm thick phenolic, ivory coloured. Frame, support legs, flanges and bracket are type 304 stainless steel with satin finish. Seat measures 970mm wide and projects 360mm from wall.

54 8215 – Mop and Broom Racks.

Formed channel constructed of 20 gauge, type 304 stainless steel. Projects 90mm from wall. Rubber cam holders ribbed for grasping. **8215-3:** Shown. Three holders, 915mm long.

55* 8425 – Clothes Hook.

Heavy duty 11 gauge type 304 stainless steel with satin finish. Hook projects 32mm from wall and is 55mm high.

56 9030 – Surface Mounted Dual Roll Toilet Paper Dispenser. Holds two toilet paper rolls up to 135mm diameter. Top roll automatically drops in place when bottom roll is used up. 16 gauge, type 304 stainless steel cabinet and mechanism. Theft resistant spindles. Size: 150 x 300 165mm.

57* 9326 – Recessed Soap Dispenser.

Provided with covered stainless steel soap tank attached to door which slides out for easy filling and cleaning. All-purpose valve dispenses liquid, and detergent type soaps. Constructed of 16 gauge, type 304 stainless steel. Capacity: 1.5L.

58* 9342 – Horizontal Soap Dispenser.

All-purpose soap valve dispenses liquid, lotion and detergent type soap. Unbreakable refill window, concealed fastening and hinged filler-top for vandal resistance. Constructed of 16 gauge, type 304 stainless steel. Capacity: 1.2L. Size: 205 x 120 x 135mm.

59* 9452 – Recessed Paper Towel Dispenser.

Durable 16 gauge door and 20 gauge type 304 stainless steel cabinet. Dispenses 600 interfold or 800 multifold paper towels. Wall opening: 325 x 675 x 110mm.

60* 94623 – Recessed Paper Towel Dispenser and Waste Receptacle. Durable 16 gauge door and 20 gauge type 304 stainless steel cabinet. Dispenses 350 interfold or 475 multifold paper towels. Removable 7.6L stainless steel waste container. Wall opening: 325 x 670 x 110mm.

61* 9469 – Recessed Paper Towel Dispenser and Waste Receptacle. Durable 16 gauge door and 20 gauge type 304 stainless steel cabinet. Dispenses 600 interfold or 800 multifold paper towels. 55.3L stainless steel waste receptacle. Removable front panel for easy cleaning. Wall opening: 400 x 1390 x 110mm.

62* 9471 – Recessed Sanitary Napkin Disposal. Durable 16 gauge door and 20 gauge type 304 stainless

steel cabinet. Self-closing stainless steel push-door covers disposal opening. Removable 7.2L stainless steel waste container. Wall opening: 230 x 460 x 125mm.

63 9474 – Recessed Waste Receptacle.

Durable 16 gauge door and 20 gauge type 304 stainless steel cabinet. Removable waste container is 45.4L stainless steel. Wall opening: 400 x 980 x 160mm.

64 R-009 – Theft Resistant Spindle.

Theft resistant spindle is available for any toilet paper holder as indicated.

65 V-320 – Retrofit Soap Valve. Chrome-plated brass housing. Internal parts constructed of ABS plastic and stainless steel that are non-corrosive to soaps, lotions and detergents.

66 Grabrail GR-00 (300-2000)

Fully welded construction finished in non-slip satin, polished or powder-coated surfaces to promote durability and reliability. Attractive stainless steel cover plates are available to conceal flange and fixings. Constructed of austenitic 18/8 grade 304 stainless steel. Available in left-hand (shown) or right-hand configuration and variable lengths from 300mm- 2000mm.

67* Grabrail GR01/40

68* Grabrail GR01/90

Fully welded construction finished in non-slip satin, polished or powder-coated surfaces to promote durability and reliability. Attractive stainless steel cover plates are available to conceal flange and fixings. Constructed of austenitic 18/8 grade 304 stainless steel. Available in left-hand (shown) or right-hand configuration.

69 Grabrail GR09

70 Grabrail GR20

71* Grabrail GR29

72* Grabrail GR34

Fully welded construction finished in non-slip satin, polished or powder-coated surfaces to promote durability and reliability. Attractive stainless steel cover plates are available to conceal flange and fixings. Constructed of austenitic 18/8 grade 304 stainless steel. Available in left-hand or right-hand (shown) configuration.

73* Grabrail GRC53

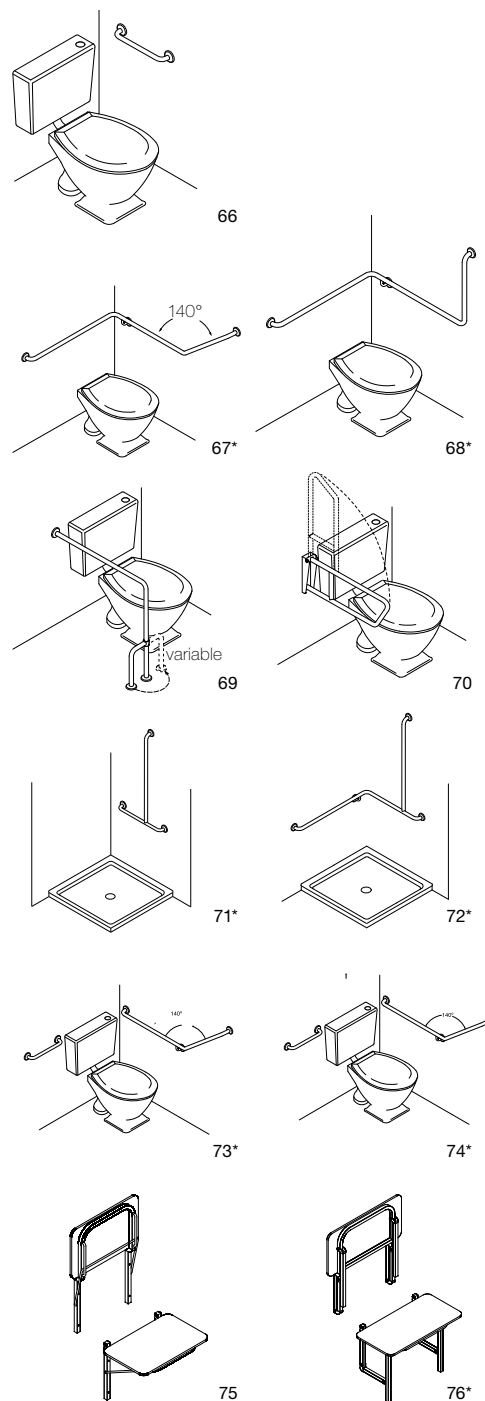
74* Grabrail GRC63

Fully welded construction finished in non-slip satin, polished or powder-coated surfaces to promote durability and reliability. Attractive stainless steel cover plates are available to conceal flange and fixings. Constructed of austenitic 18/8 grade 304 stainless steel. Available in left-hand (shown) or right-hand configuration.

75 Folding Shower Seat SS600

76* Folding Shower Seat SS960

Solid white acrylic, 12mm thick. Also available in white powder-coated stainless steel slats.



* Product fulfills Australian Standards for disabled use.

for more information on detailed product specifications visit
www.jdmacdonald.com.au



A division of MacDonald Johnston Engineering Company Pty. Ltd. ACN 004 992 090 65-73 Nantilla Road, Clayton North, Vic. 3168 Tel: (03) 9271 6400 Fax: (03) 9271 6485
Adelaide (08) 8262 3122, **Brisbane** (07) 3205 3166, **Canberra** (02) 9756 1622, **Darwin** (08) 8262 3122, **Hobart** 1800 023 441, **Launceston** 1800 023 441,
Melbourne (03) 9271 6400, **Perth** (08) 9271 8455, **Sydney** (02) 9756 1622, **Townsville** (07) 3205 3166

To order: Freecall 1800 023 441 or phone your nearest JD MacDonald Sales Office. Email: enquiry@jdmacdonald.com.au Illustrations and descriptions included here are applicable to production as of the date of this leaflet. JD MacDonald reserves the right and does from time to time make changes and improvements in designs and dimensions. Rev:01