

Luxury or necessity?

Let's be honest, nappy changing in a public space can be a dirty business – ask any new parent! How many times have parents left shopping centres, restaurants or recreational facilities to change their child in the back of their car or even over a bathroom sink making the whole exercise dangerous, time consuming and just plain difficult. New parents are active consumers and without creative childcare solutions, profits will walk out the door. Catering to the littlest of customers can mean continued and increased patronage through word of mouth. With this in mind, JD Macdonald understands the value of bathroom real estate. Each childcare piece has been designed to fit seamlessly into modern commercial spaces. Better still, JD Macdonald baby change stations can fold away neatly which is a fantastic space saver. Neutral finishes and minimalist in appearance was the visual design brief for each piece. And we nailed it. Function, form, reliability, durability are delivered in this range without sacrificing the low profile and stylish look and finish. Each childcare piece

is ergonomic, safe, hygienic and easy to clean. The JD Macdonald range of baby change stations comes in a variety of options. They include wall mounted parallel or vertical, counter top recessed or surface mounted and also recessed stainless steel. Each baby change station has a \$20 million product liability insurance policy and a five-year replacement warranty against vandalism*. Baby change stations are also

*Vandalism policy and five-year warranty apply only to wall mounted baby changing stations.



This can be just as difficult, especially in a public space. The JD Macdonald range of space saving, stackable, ergonomic highchairs are made of high impact polyethylene, which resists odours and is very easy to clean. They also look great and are available in either grey or red complimenting a range of interiors. Creative childcare solutions can turn a potential problem into an opportunity and the simple truth is, they're not a luxury but a necessity!



A BCV-JDM Vertical baby change station

Materials
Constructed of blow-moulded high-density polyethylene. Reinforced steel-on-steel hinge mechanism with 12-gauge steel mounting plates and mounting hardware included. Moulded in universal instruction graphics and safety messages in 6 languages and Braille. Smooth contoured changing surface area is 2730 sq mm and comes with nylon safety straps and bag hooks.

Specification
Baby changing station shall be durable, high-impact polyethylene which is easy to clean, resists odours and bacterial growth. Design of unit shall be surface-mounted. Unit is equipped with a pneumatic cylinder for controlled opening and closing of bed. Unit has a built-in liner dispenser for use with 3-ply chemical free biodegradable sanitary liners (holds approx. 25 liners). Rated to support a static load of 136kg; tested to 182kg - to do this, the unit must be properly installed onto a permanent wall that is capable of supporting that much weight. Baby changing station meets numerous International Safety Standards.

Warranty and product liability
Unit is backed by a 5 year limited warranty on materials and workmanship and 5 year replacement warranty against vandalism. Unit comes with a \$20 million general product liability insurance policy.

A BCP-JDM Parallel baby change station

Materials
Constructed of blow-moulded high-density polyethylene. Reinforced steel-on-steel hinge mechanism with 12-gauge steel mounting plates and mounting hardware included. Moulded in universal instruction graphics and safety messages in 6 languages and Braille. Smooth contoured changing surface area is 2873 sq mm and comes with nylon safety straps and bag hooks.

Specification
Baby changing station shall be durable, high-impact polyethylene which is easy to clean, resists odours and bacterial growth. Design of unit shall be surface-mounted. Unit is equipped with a pneumatic cylinder for controlled opening and closing of bed. Unit has a built-in liner dispenser for use with 3-ply chemical free biodegradable sanitary liners (holds approx. 25 liners). Rated to support a static load of 136kg; tested to 182kg - to do this, the unit must be properly installed onto a permanent wall that is capable of supporting that much weight. Baby changing station meets numerous International Safety Standards.

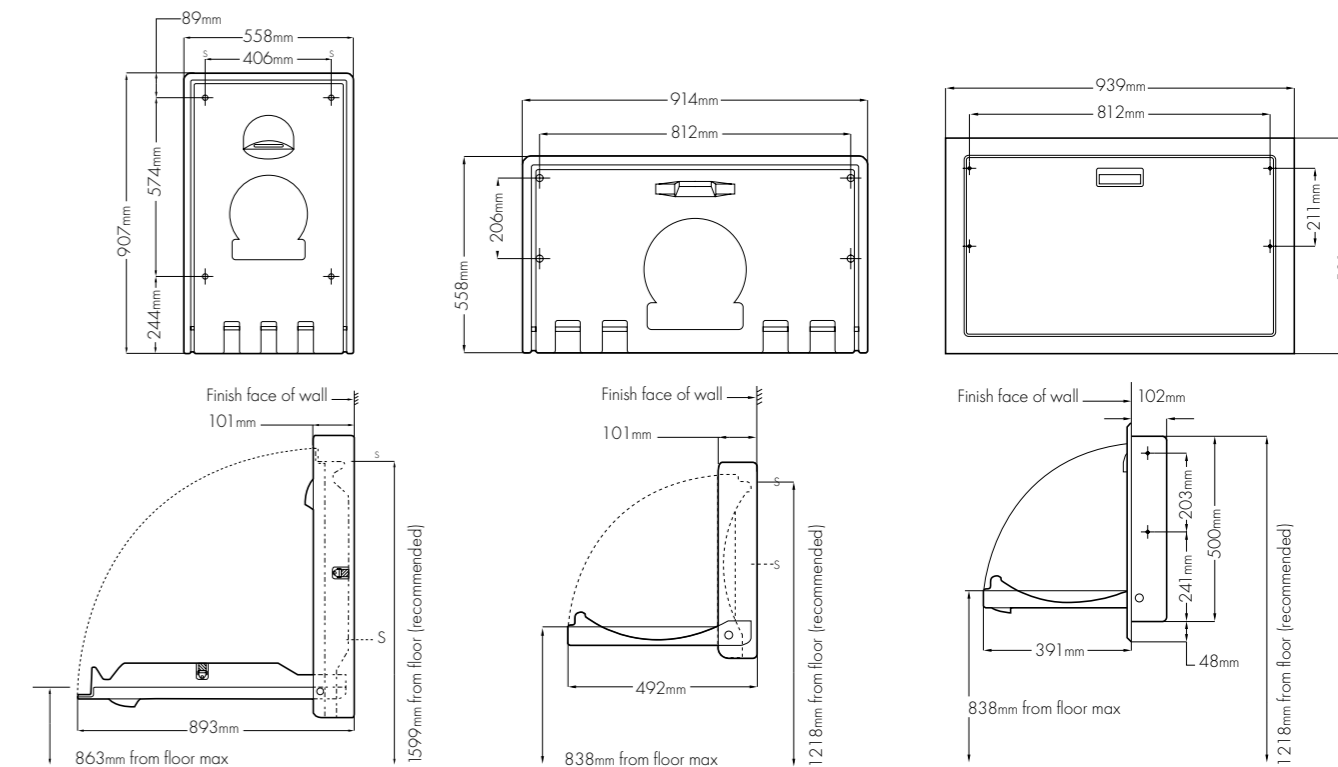
Warranty and product liability
Unit is backed by a 5 year limited warranty on materials and workmanship and 5 year replacement warranty against vandalism. Unit comes with a \$20 million general product liability insurance policy.

A BCP-SSRE Recessed stainless steel baby change station

Materials
Constructed of blow-moulded high-density polyethylene with 304 brushed stainless steel flange. Reinforced steel-on-steel hinge mechanism with 12-gauge steel mounting plates and mounting hardware included. Moulded in universal instruction graphics and safety messages in 6 languages and Braille. Smooth contoured changing surface area is 2873 sq mm and comes with nylon safety straps and bag hooks.

Specification
Baby changing station shall be durable, high-impact polyethylene with 304 brushed s/steel flange. Polyethylene material is easy to clean, resists odours and bacterial growth. Design of unit shall be recessed. Unit is equipped with a pneumatic cylinder for controlled opening and closing of bed. Unit has a built-in liner dispenser for use with 3-ply chemical free biodegradable sanitary liners (holds approx. 25 liners). Rated to support a static load of 136kg; tested to 182kg - to do this, the unit must be properly installed onto a permanent wall that is capable of supporting that much weight. Baby changing station meets numerous International Safety Standards.

Warranty and product liability
Unit is backed by a 5 year limited warranty on materials and workmanship and 5 year replacement warranty against vandalism. Unit comes with a \$20 million general product liability insurance policy.





A LAYBED-S
Surface-mounted countertop baby change station

Materials
Constructed of thermoformed high-density polyethylene. Mounting hardware included. Universal instruction graphics and safety messages in 6 languages. Smooth contoured changing surface area comes with nylon safety straps.

Specification
For use in bathrooms where counter space is more available than wall space. Baby changing station shall be durable, high-impact polyethylene, has no sharp corners, is easy to clean, resists odours and bacterial growth. Design of unit shall be countertop mounted. Unit has two moulded in-liner dispensers for use with 3-ply chemical free biodegradable sanitary liners (holds approx. 25 liners each).

Warranty and product liability
Unit is backed by a 12 month limited warranty on materials and workmanship. Unit comes with a \$20 million general product liability insurance policy.

A LAYBED
Recessed countertop baby change station

Materials
Constructed of thermoformed high-density polyethylene. Mounting hardware included. Universal instruction graphics and safety messages in 6 languages. Smooth contoured changing surface area comes with nylon safety straps.

Specification
For use in bathrooms where counter space is more available than wall space. Baby changing station shall be durable, high-impact polyethylene, has no sharp corners, is easy to clean, resists odours and bacterial growth. Design of unit shall be counter recessed mounted.

Warranty and product liability
Unit is backed by a 12 month limited warranty on materials and workmanship. Unit comes with a \$20 million general product liability insurance policy.

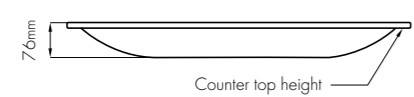
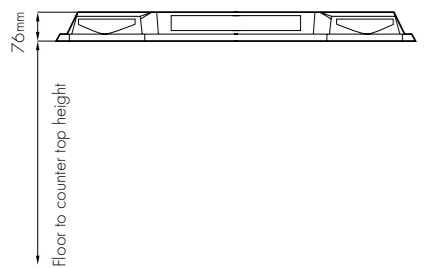
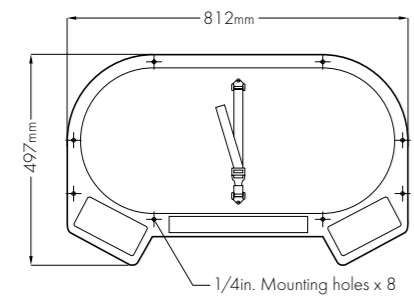
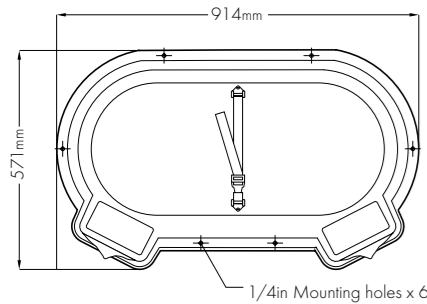
A BHCG / A BHCR
A BHCG Grey high chair
A BHCR Red high chair

Materials
Constructed of high density rotationally moulded polyethylene.

Specification
Sleek ergonomic design. Seamless construction eliminates sharp corners. High-impact polyethylene is easy to clean, resists odours and bacterial growth. Integrated non-skid foot-rest and bag hook. Available with or without tray. Recessed wheels eliminate accidental rolling and allows for movement. Moulded hand grip for easy lifting. Space-saving stackable storage. Fits comfortably under standard food service tables (762mm).

Warranty and product liability
Unit is backed by a 12 month limited warranty on materials and workmanship. Unit comes with a \$20 million general product liability insurance policy.

Options
Model No. A BHCGTRAY – Grey highchair tray
Model No. A BHCRTRAY – Red highchair tray



little customers
big business



HARDWARE AND INSTALLATION

Wall mounted baby change stations
Hinge system

The unique hinge system defines durability and safety. The threaded steel rod inserts into a steel casing, which allows free movement. This protected steel hinge eliminates friction and wear points against the polyethylene construction.

Pneumatic gas spring mechanism

Pneumatic gas spring mechanism ensures safe opening and closing to minimise any chance of pinched fingers. This mechanism also provides assurance against sagging bed platforms after years of commercial use. Square and fitted front panels are also maintained for long-life, eliminating costly replacements.

Mounting supports

Mounting supports are made from 12-gauge steel, providing exceptional dead weight distribution and reducing the chance of vandalism.

CONSUMABLES

Sanitary liners

Product No. P1 – Sanitary liners are readily available for all JD Macdonald baby change stations in 3 ply environmentally safe biodegradable liners. Liner size 30 x 50cm and comes in boxes of 500.

WARRANTY

A BCV-JDM
A BCP-JDM
A BCP-SSRE

All wall mounted baby change stations distributed by JD Macdonald are guaranteed to be free from defective materials and workmanship for 5 years from the date of purchase subject to the product being installed and maintained in accordance with the Installation and Operating instructions supplied. Products returned to JD Macdonald under this warranty will be, at the option of the company, repaired or replaced at no charge to the purchaser.

Vandalism protection

Should any wall mounted baby change station distributed by JD Macdonald be vandalised rendering the unit unsafe or unusable in the 5 year period from the date of purchase, JD Macdonald will provide a \$100 discount on the purchase of a replacement unit.

WARRANTY

A LAYBED-S
A LAYBED
A BHCG / A BHCR

All countertop baby change stations and high chairs distributed by JD Macdonald are guaranteed to be free from defective materials and workmanship for 12 months from the date of purchase subject to the product being installed and maintained in accordance with the Installation and Operating instructions supplied. Products returned to JD Macdonald under this warranty will be, at the option of the company, repaired or replaced at no charge to the purchaser.

PRODUCT LIABILITY INSURANCE

A \$20 million general product liability insurance policy is maintained on all childcare facilities.



jdmacdonald.com.au



Quality Endorsed Company

ISO 9001 Lic: OEC21418
Standards Australia

A division of MacDonalld Johnston Engineering Company Pty. Ltd. ABN 68 004 992 090 65-73 Nantilla Road, Clayton North, Vic. 3168 Tel: (03) 9271 6400 Fax: (03) 9271 6485
Adelaide (08) 8168 2222, Brisbane (07) 3205 3166, Canberra (02) 9756 1622, Darwin (08) 8168 2222, Hobart 1800 023 441, Launceston 1800 023 441,
Melbourne (03) 9271 6400, Perth (08) 9271 8455, Sydney (02) 9756 1622, Townsville (07) 3205 3166

To order: Freecall 1800 023 441 or phone your nearest JD Macdonald Sales Office. Email: enquiry@jdmacdonald.com.au. Illustrations and descriptions included here are applicable to production as of the date of this leaflet. JD Macdonald reserves the right and does from time to time make changes and improvements in designs and dimensions.